

LED-Panel

Accurate camera timing measurements

Measure and analyze all of the relevant timing features and evaluate the autofocus performance of your digital camera.

Main Features

- * Measure all timing parameters
- * Measurement accuracy greater than one ms
- * Applicable to ISO 15781 and IEC 62676-5
- * Command line interface and control software
- * Customize peak wavelength

Software
INCLUDED

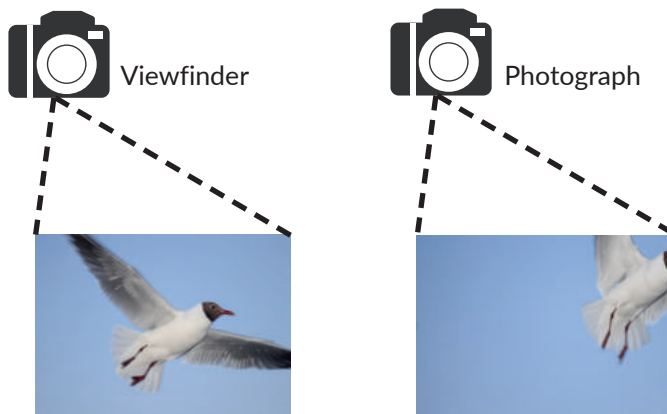
API
AVAILABLE

Standard
COMPLIANT



LED-Panel IR and custom wavelengths

The LED-Panel IR expands the testing range to the infra-red region. It is available with a peak wavelength of either 850 nm or 940 nm. We also offer the LED-Panel with custom wavelengths for those with special requirements.



Shooting time lag, subject missed



Timing measurement solution

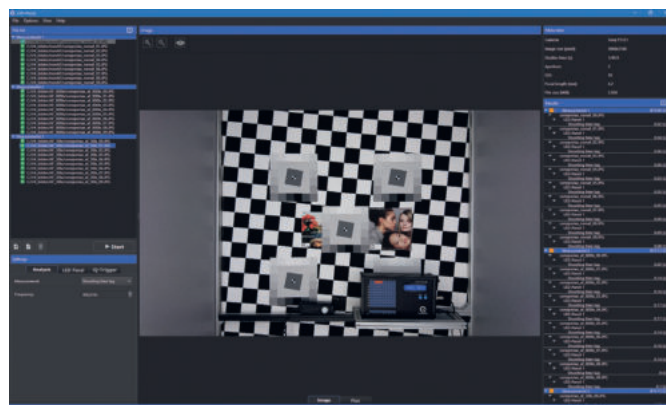
Timing measurement device

The primary function of the LED-Panel is to determine the most important timing values for a digital camera system. You can separately measure shooting time lag and shutter release time lag and then subtract them from one another to determine the precise autofocus performance of the camera.

The LED-Panel uses control software, command-line software, and a USB interface to control the device. The device consists of a 10 x 10 LED light board that can be adjusted for different frequencies to suit testing needs.

Measurable Parameters

- * Shooting time lag
- * Shutter lag with and without autofocus
- * Autofocus time
- * Negative shooting time lag
- * Burst frame rate
- * Display refresh rate
- * Exposure time
- * Rolling shutter speed



LED-Panel software

At a Glance	LED-Panel / LED-Panel IR
Principle	Array of LEDs to perform timing measurements on digital cameras.
Number of LEDs	110 (array of 10 x 10 LEDs, 1 row with 10 LEDs for multiplying counts)
Accuracy	< 0.06% (1 ms - 10 s)
Manual control	Operating buttons: switching between single and continuous trigger, Rotatory switch: adjusting the frame rate frequency, time, LCD brightness Display: shows current setting
Operating mode	External trigger, internal single trigger, continuous trigger
Adjustable times	Via USB: 200 μ s to 10 s (depending on measurement mode) Manual control: 20 μ s to 10 s (depending on measurement mode)
Maximum reading measurement time	1000 x of set time
LED running directions	Left to right, right to left, top to bottom, bottom to top
Frame Rate measurement frequency	Adjustable from 1.0 Hz to 100 Hz
Software system requirements	PC with Windows 7 operating system (or higher) and USB port
Additional functions	Software control LED-Panel V4 Analysis of images taken from LED-Panel V4