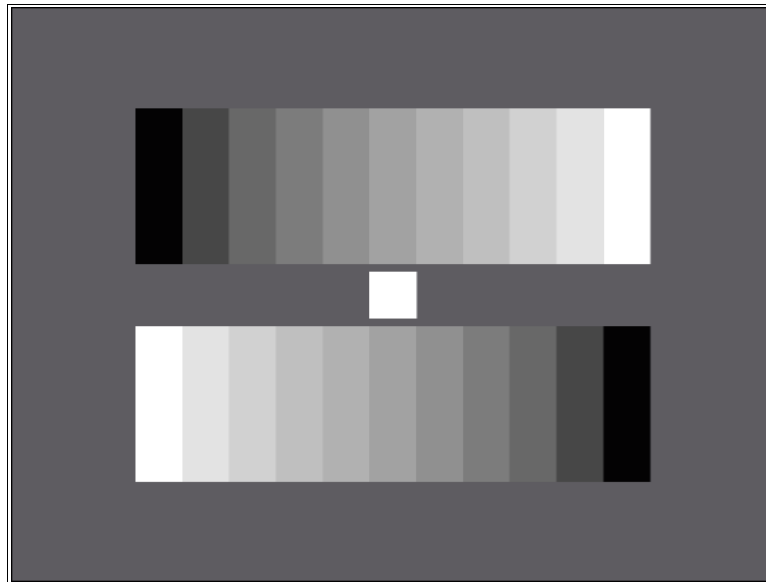




LINEAR GRAY SCALE TEST CHART

TRANSPARENCY



Two 11-graduated counter current gray scales are arranged on a gray background ($D \approx 0.65$), the gray scales being graduated linear. Related to the densities of the gray scales: $\gamma = 1$. The contrast range of the gray scales is 40:1.

The values of the 11-graduated gray scales are the follows:

Step	Density	Reflectance in %
1	0.05	89
2	0.10	80
3	0.14	72
4	0.20	63
5	0.26	54
6	0.34	45
7	0.43	37
8	0.55	28
9	0.71	19
10	0.96	11
11	1.65	2

The density of the white filed between the gray scales is $D = 0.05$ (reflectance = 89%).