



Acceptance Protocol

SN:

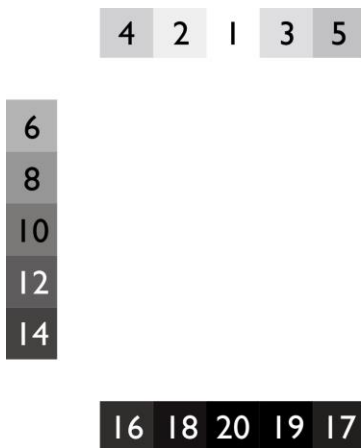
EXAMPLE

Order Confirmation:

Date:

Operator:

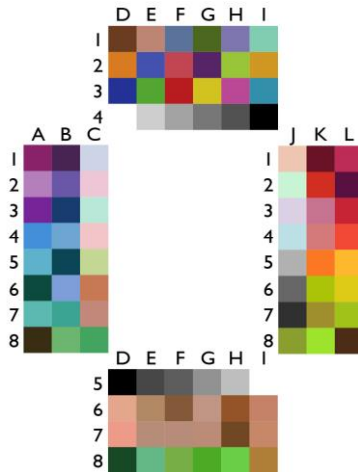
OECF



Patch			
Step	Measured	Reference	Deviation
1		0,08	
2		0,10	
3		0,14	
4		0,17	
5		0,21	
6		0,24	
7		0,27	
8		0,31	
9		0,34	
10		0,39	
11		0,43	
12		0,48	
13		0,52	
14		0,58	
15		0,66	
16		0,73	
17		0,85	
18		0,99	
19		1,18	
20		1,40	
Background		0,78	



COLOR



	L	a	b
A1	36	49	-14
A2	59	37	-27
A3	34	42	-34
A4	47	-15	-39
A5	59	-26	-20
A6	26	-9	-1
A7	63	-36	-7
A8	22	1	2

	L	a	b
B1	26	18	-22
B2	40	31	-45
B3	27	-1	-20
B4	58	-13	-25
B5	26	-6	-9
B6	60	-4	-28
B7	53	-45	-10
B8	62	-38	19

	L	a	b
C1	81	-1	-4
C2	82	15	-1
C3	87	-18	-2
C4	82	13	8
C5	85	-11	27
C6	58	29	35
C7	61	20	15
C8	52	-52	15

	L	a	b
D1	29	18	15
D2	65	33	61
D3	29	21	-45
D4	96	1	-1
D5	22	1	2
D6	75	20	25
D7	74	30	26
D8	26	-10	2

	L	a	b
E1	61	19	17
E2	34	15	-47
E3	57	-39	38
E4	79	1	-1
E5	25	1	1
E6	58	13	25
E7	61	14	16
E8	62	-41	7

	L	a	b
F1	44	-4	-20
F2	42	53	23
F3	42	52	30
F4	63	1	-1
F5	34	0	0
F6	40	13	24
F7	62	14	16
F8	59	-32	44

	L	a	b
G1	37	-12	16
G2	29	30	-29
G3	77	4	74
G4	44	0	0
G5	54	1	-1
G6	62	14	15
G7	62	17	17
G8	57	-42	38

	L	a	b
H1	50	9	-26
H2	71	-23	63
H3	47	56	-22
H4	29	1	1
H5	73	1	-1
H6	42	21	28
H7	31	17	16
H8	62	-51	45

	L	a	b
I1	73	-35	1
I2	70	15	65
I3	45	-27	-29
I4	22	1	2
I5	96	1	-1
I6	61	24	23
I7	63	22	23
I8	56	13	46

	L	a	b
J1	83	13	17
J2	88	-16	7
J3	82	5	-4
J4	83	-8	-6
J5	68	1	-1
J6	36	0	0
J7	22	1	2
J8	60	-15	47

	L	a	b
K1	29	22	8
K2	51	61	46
K3	56	36	5
K4	61	39	20
K5	64	40	61
K6	75	-8	71
K7	56	0	44
K8	74	-27	68

	L	a	b
L1	42	57	12
L2	27	21	-2
L3	44	59	29
L4	52	63	46
L5	76	14	73
L6	80	4	79
L7	74	-15	69
L8	25	9	6

RESOLUTION / SLANTED EDGES

	Measured density	Calculated reflectance	Modulation	Contrast Ratio
low contrast	1,02	0,10	49%	3
	0,56	0,28		
high contrast	1,31	0,05	82%	10
	0,31	0,49		

All values in this certificate measured with X-Rite eXact.

https://www.image-engineering.de/content/products/charts/IE_reference_data_accuracy.pdf