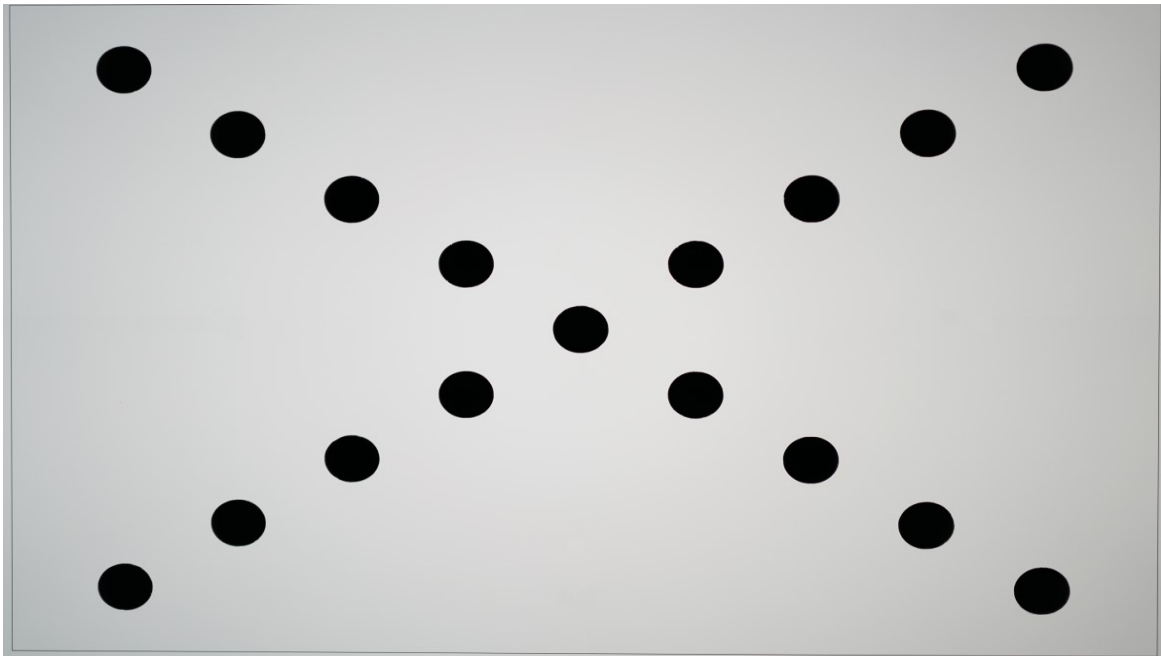




Quick Start Guide

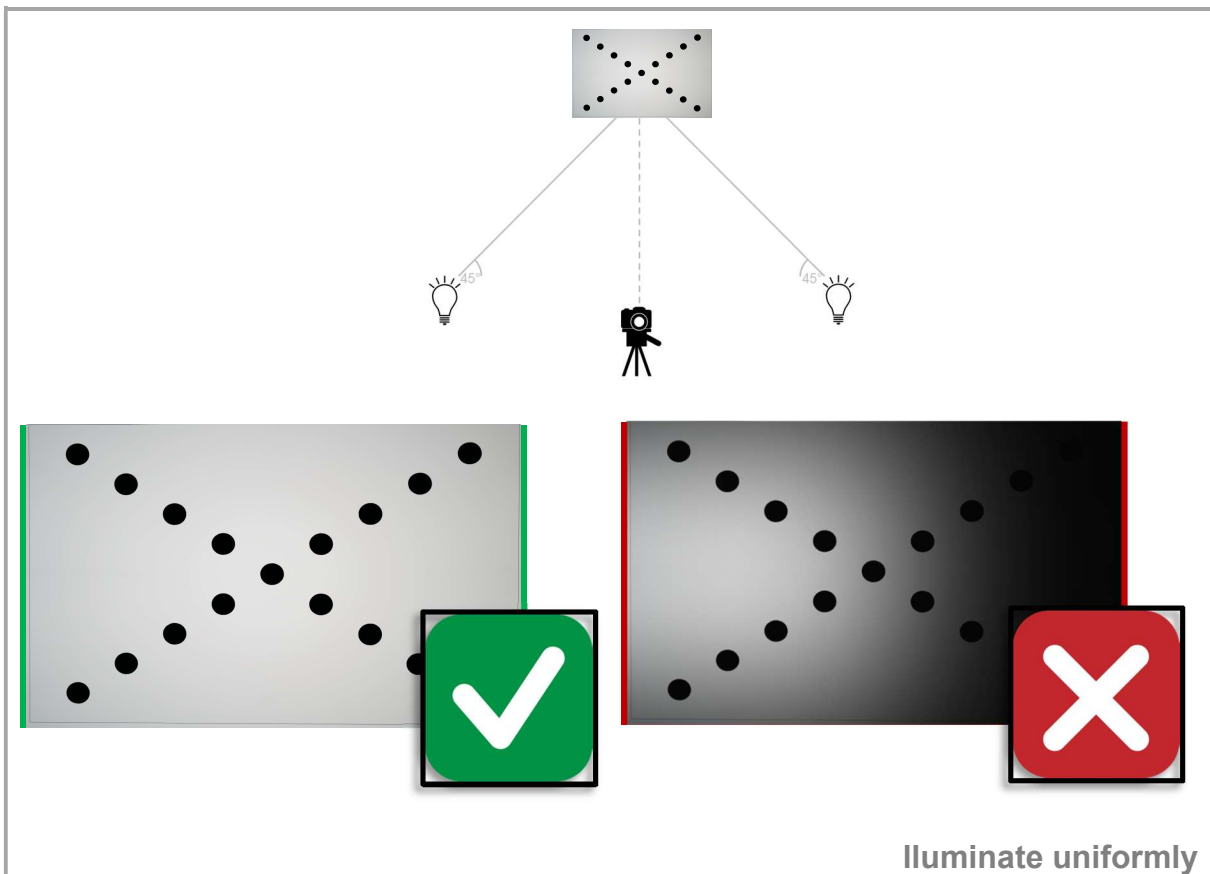
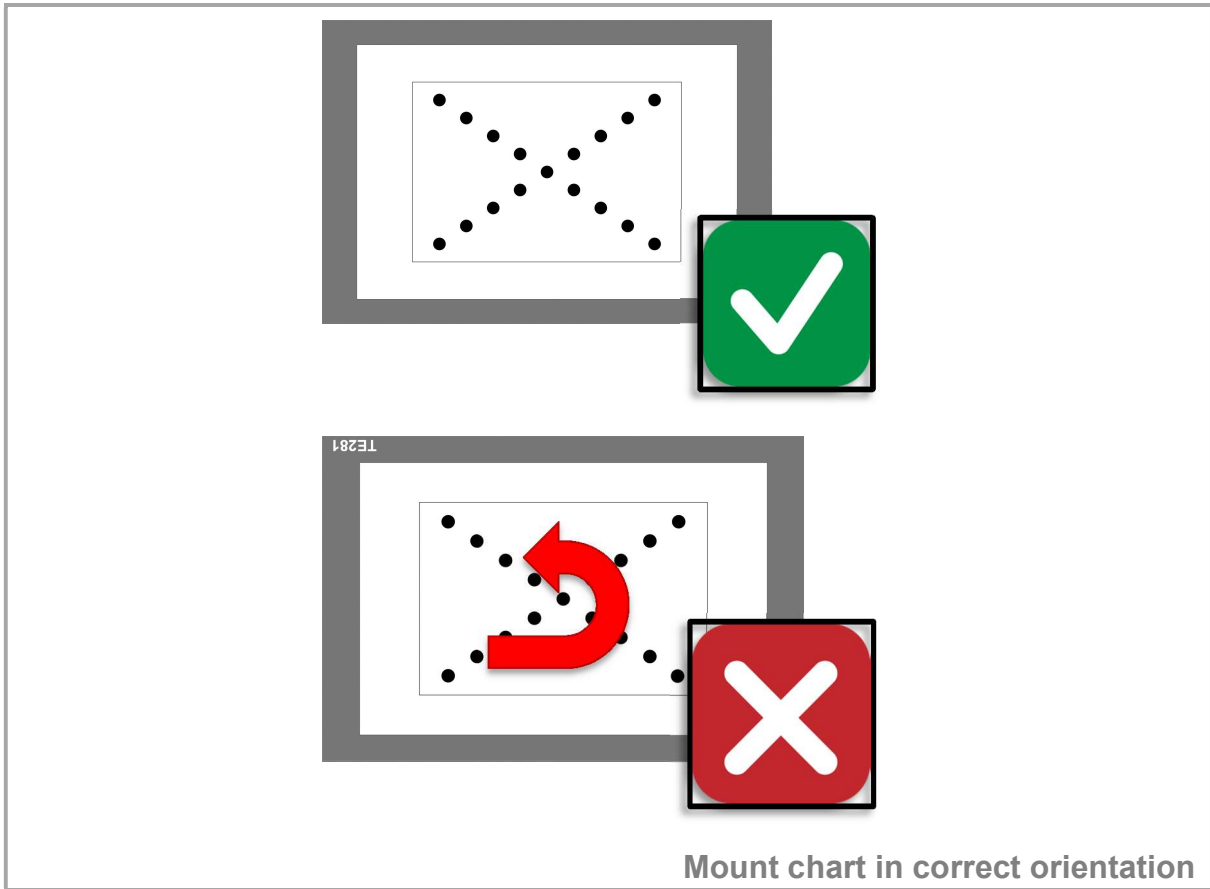
TE281

July 17, 2017





1 PREPARE CHART

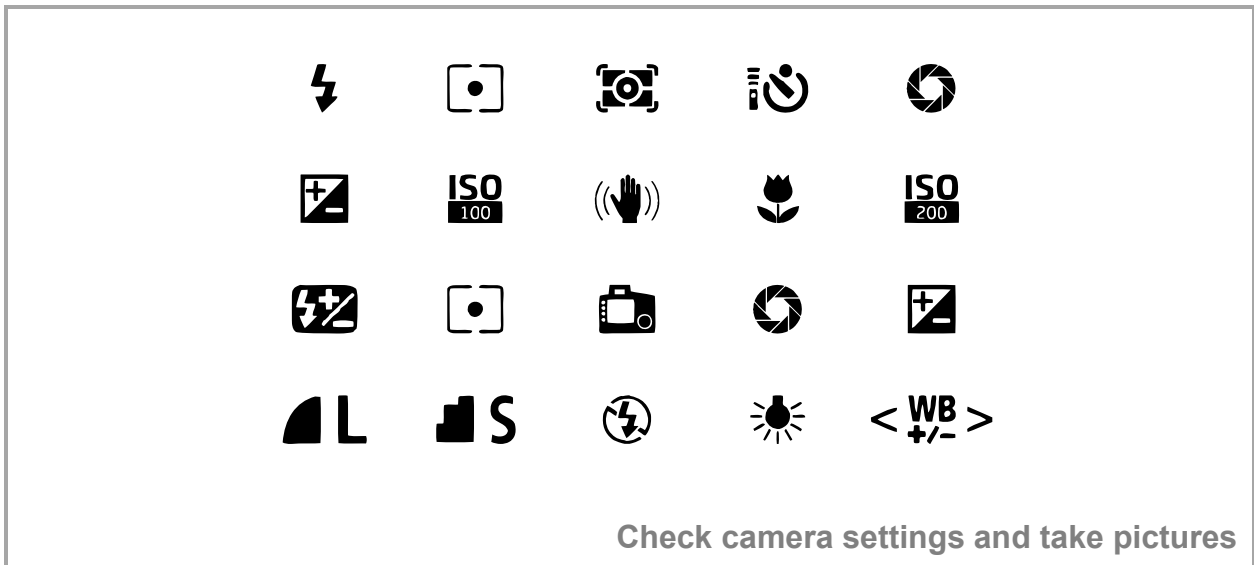





2 PREPARE CAMERA

chart size \neq picture size

Align camera and chart



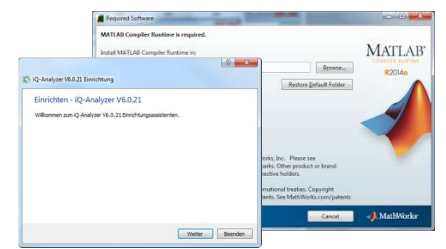
3 START SOFTWARE

FREE DEMO  **OR BUY**

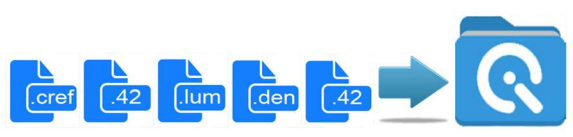
Request free demo or buy

  www.image-engineering.de

Use shipped DVD or download*



Install



Copy reference files if necessary



Attach USB dongle and run

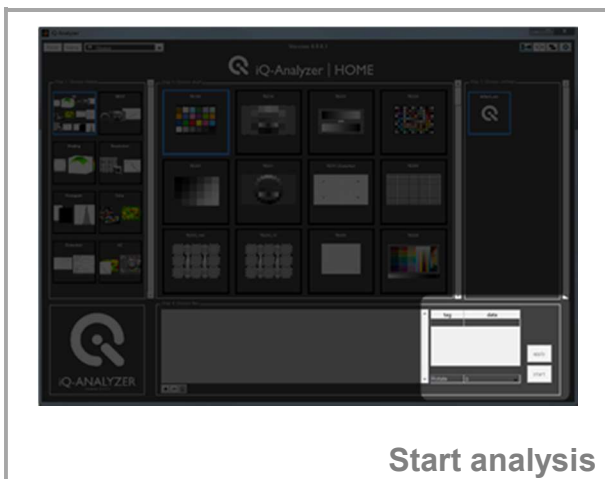
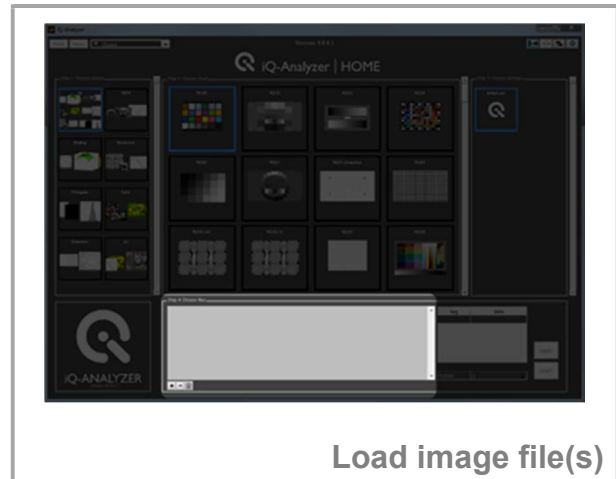
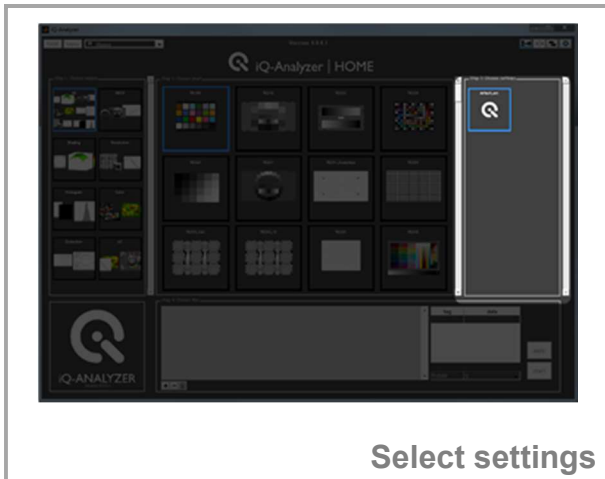
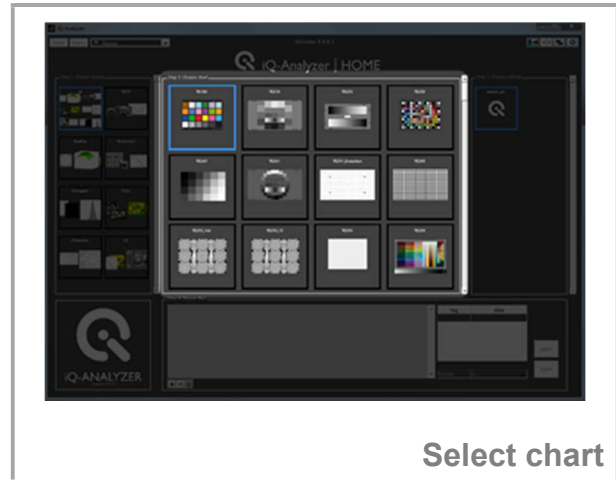
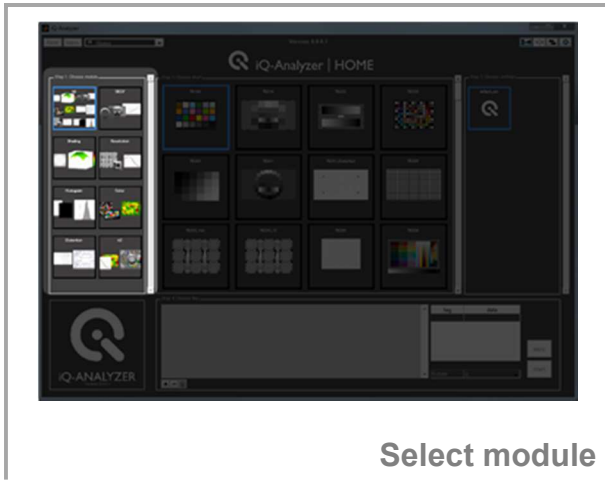
For a three month trial version of the iQ-Analyzer please contact

sales@image-engineering.de

* <https://www.image-engineering.de/products/software/376-iq-analyzer#downloads>



4 USE HOME SCREEN



For customizing the HOME SCREEN to your specific needs, please read the

iQ-Analyzer user manual *

Please note: Default Home Screen just contains default settings.

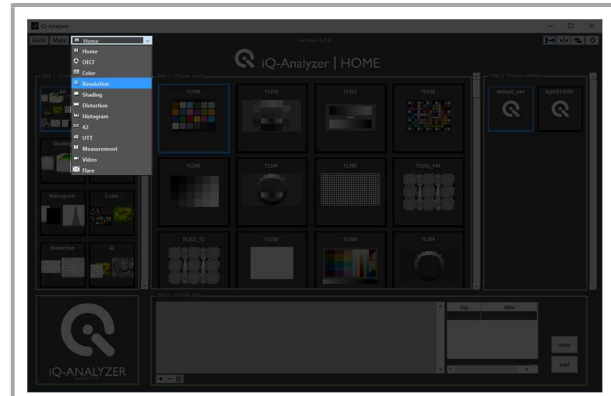
* https://www.image-engineering.de/content/products/software/analyzer/downloads/iQ-Analyzer_manual.pdf



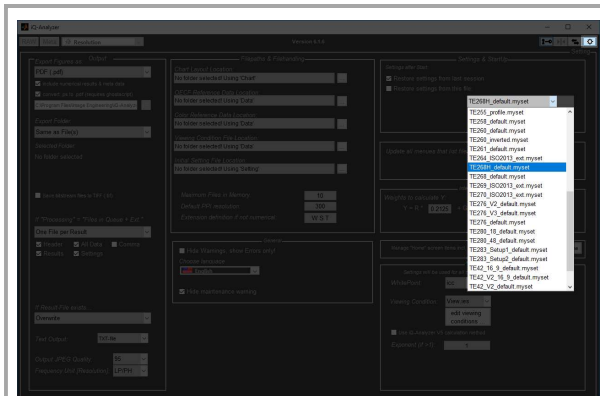
5 USE OF ADMINISTRATOR MODE



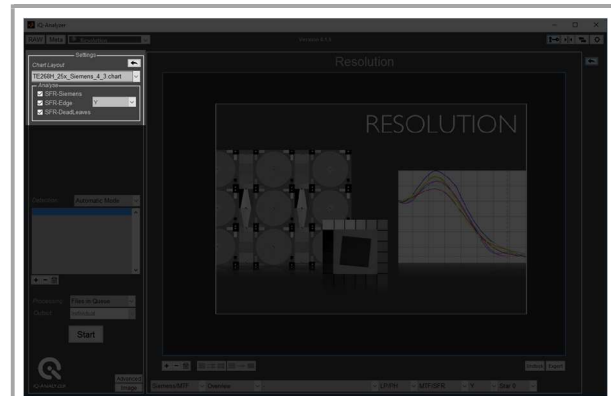
Enable Administrator Mode



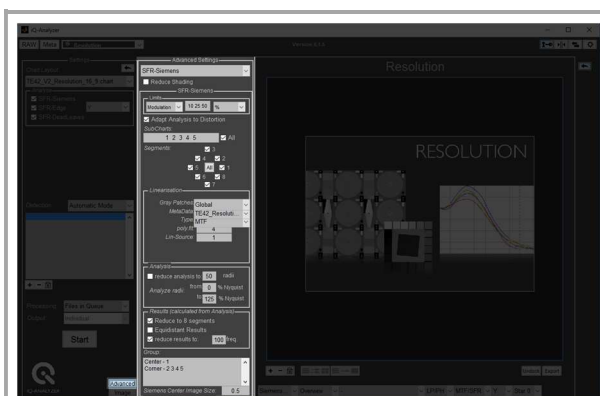
Choose module



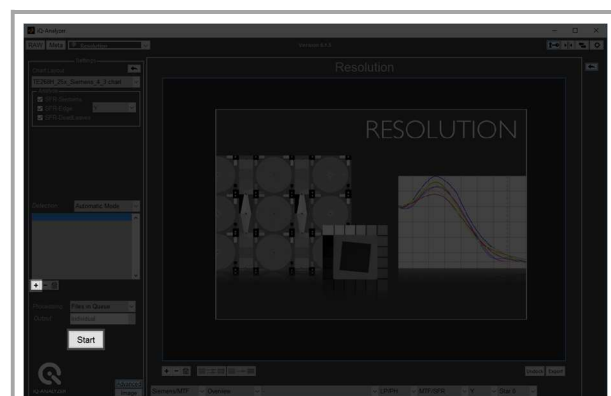
Go to Advanced Settings and choose .myset file for chart depending Settings



Check chart dependent Settings



Check Advanced Settings



Load image file(s) and start analysis

For all chart specific information about Settings and Advanced Settings please read the

iQ-Analyzer user manual *

* https://www.image-engineering.de/content/products/software/analyzer/downloads/iQ-Analyzer_manual.pdf



6 WATCH THE RESULTS

Image

Result

Toggle between image and results

F [%] vs. field

- All quadrants (mean)
- Quadrant 1
- Quadrant 2
- Quadrant 3
- Quadrant 4

Line plot

F [%] vs. field

Toggle between different result views



Hide and show side panels

Flare_TE281_DSLM4_f1,8.JPG

Flare_TE281_DSLM4_f1,8_check.jpg

Flare_TE281_DSLM4_f1,8_flare.bt

View auto-generated result files

Congratulation!
You ran your first analysis!



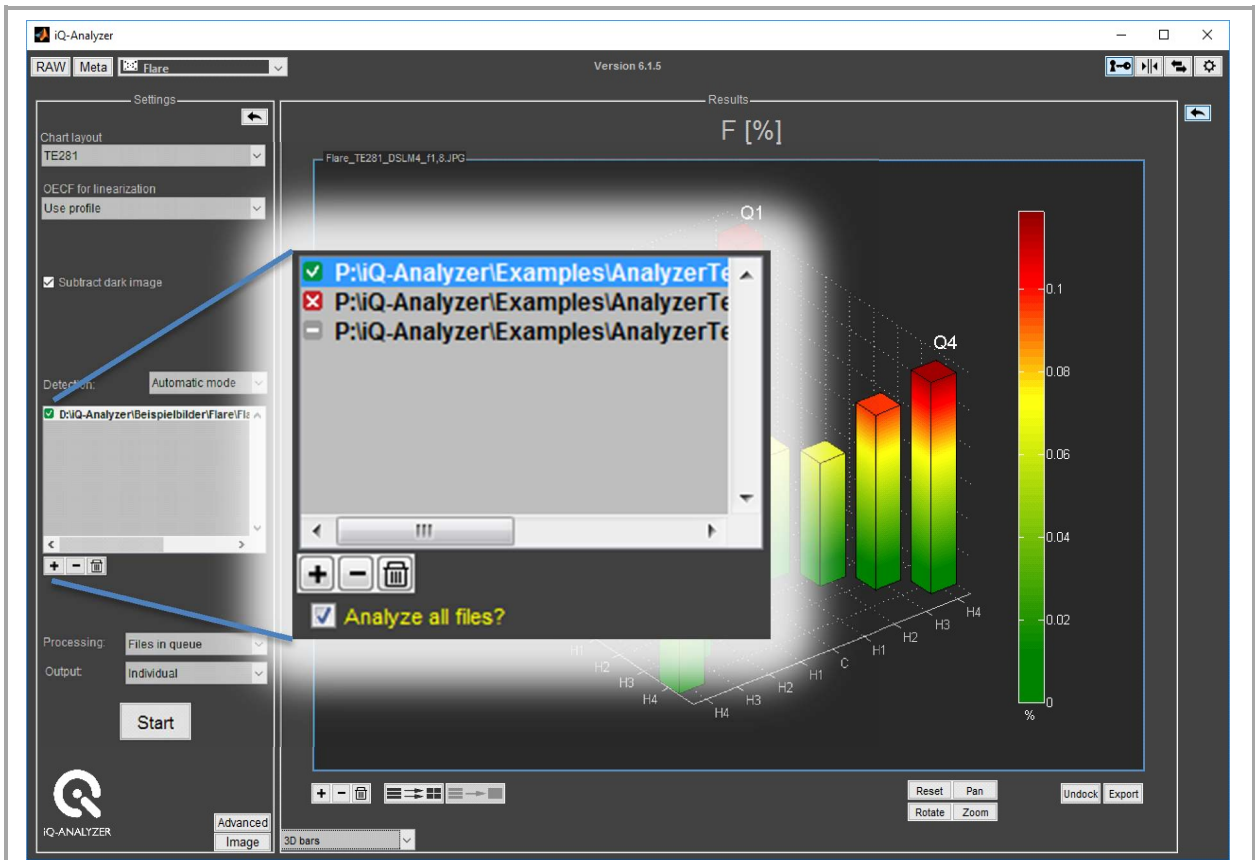
7 WHAT'S NEXT?

The screenshot shows the IQ-Analyzer interface with a 3D bar chart titled 'F [%]' representing flare data. The chart has four quadrants labeled Q1, Q2, Q3, and Q4. An 'Export' button is overlaid on the chart. A blue arrow points from the 'Export' button to a detailed data table below.

exampleimage	Model	DSLM5
	Date	18-Mar-2016 10:25:58
	Time	0.005
	F-Stop	1.8
	ISO	100
	f [mm]	55
	Profile	sRGB
	Width	7952
	Height	5304
	Serial:	
	Lens:	
	Firmware:	noExif
	Illumination [lux]:	
	Object Distance [m]:	
	Laboratory:	
	Operator:	

	F [%]	YB	YW
C	0.072288	0.00055155	0.78299
Q1H1	0.067923	0.00050114	0.73781
Q1H2	0.067546	0.00045367	0.67185
Q1H3	0.096298	0.00057531	0.59743
Q1H4	0.11899	0.00060216	0.50607
Q2H1	0.065076	0.00048889	0.75127
Q2H2	0.064005	0.00044985	0.70284
Q2H3	0.096771	0.00061796	0.63858
Q2H4	0.10881	0.00060282	0.55401
Q3H1	0.064154	0.00048295	0.7528
Q3H2	0.06409	0.00045063	0.70311
Q3H3	0.092576	0.00058906	0.6363
Q3H4	0.10078	0.00055406	0.54974
Q4H1	0.068146	0.00050467	0.74057
Q4H2	0.067442	0.00045567	0.67594
Q4H3	0.095578	0.00057431	0.60088
Q4H4	0.11543	0.00058324	0.50528

Export results



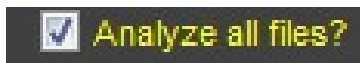
Analysis successful



Analysis failed



Not analyzed yet



Analyze successfully analyzed images again?

Change settings and re-start analysis



8 NEED HELP?



Read the iQ-Analyzer user manual*



Attend our Webinars**



Ask our Support Team

9 CONTACT US

**Image Engineering GmbH & Co. KG
Support**

T +49 2273 99 991 0
F +49 2273 99 991 10

support@image-engineering.de

Germany

**Image Engineering GmbH & Co. KG
Sales**

T +49 2273 99 991 0
F +49 2273 99 991 10

sales@image-engineering.de

Germany

**Image Engineering GmbH & Co. KG
Direct Marketing Sales and Applications**

T +1 669 200 8921

sales@image-engineering.us

USA

* https://www.image-engineering.de/content/products/software/analyzer/downloads/iQ-Analyzer_manual.pdf

** <https://www.image-engineering.de/products/software/376-iq-analyzer#webinars>