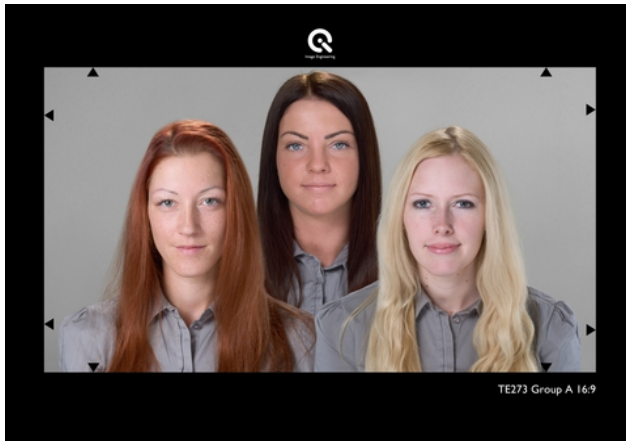
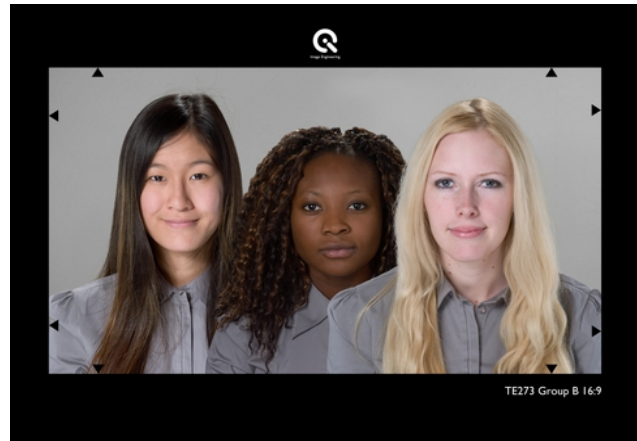


NATURAL SKIN TONE TEST CHARTS

REFLECTIVE

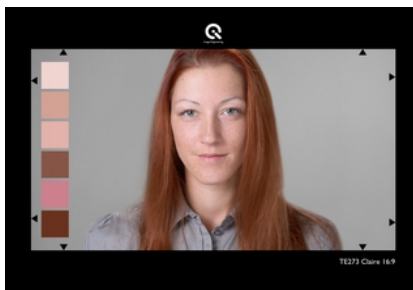


TE273 Group A

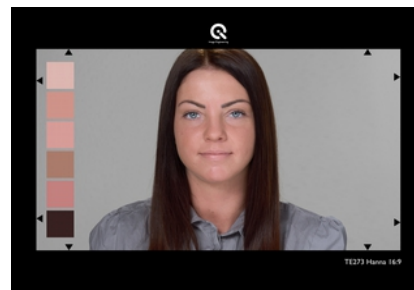


TE273 Group B

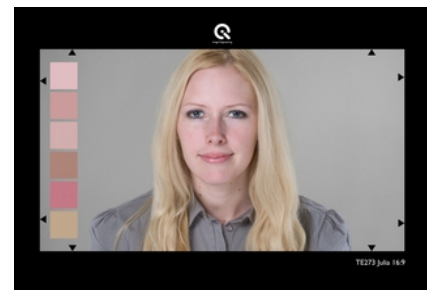
The Natural Skin Tone Test Charts TE273 are designed for evaluating the flesh tone rendition of electronic cameras. The series provides different skin tones of natural, not made-up persons. Therefore the reproduction of the natural texture of the skin can also be evaluated. Five single portraits and two different groups are available as single chart or set (chart folder with 6 charts).



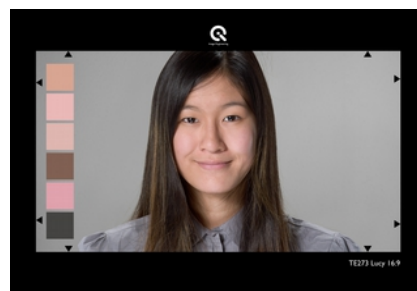
TE273 Claire



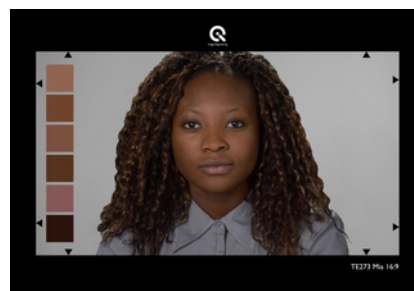
TE273 Hanna



TE273 Julia



TE273 Lucy



TE273 Mia



The skin tones of the marked regions in each face/hair are repeated in the patches at the left. The color coordinates in the CIE-L*a*b*-system for each patch are mentioned in the table below.

| | Chart | L* | a* | b* |
|--------------|-------|----|----|----|
| TE273 Claire | | 86 | 7 | 6 |
| | | 72 | 17 | 16 |
| | | 79 | 15 | 12 |
| | | 41 | 19 | 16 |
| | | 65 | 31 | 9 |
| | | 30 | 21 | 16 |
| TE273 Hanna | | 78 | 13 | 10 |
| | | 69 | 22 | 15 |
| | | 72 | 21 | 14 |
| | | 58 | 16 | 15 |
| | | 62 | 25 | 13 |
| | | 23 | 4 | 2 |
| TE273 Julia | | 79 | 10 | 4 |
| | | 68 | 17 | 9 |
| | | 74 | 11 | 7 |
| | | 59 | 14 | 12 |
| | | 61 | 30 | 8 |
| | | 70 | 7 | 16 |
| TE273 Lucy | | 74 | 17 | 18 |
| | | 80 | 16 | 10 |
| | | 78 | 12 | 11 |
| | | 44 | 11 | 11 |
| | | 76 | 22 | 7 |
| | | 29 | 0 | 1 |
| TE273 Mia | | 47 | 16 | 16 |
| | | 35 | 19 | 18 |
| | | 39 | 19 | 16 |
| | | 29 | 12 | 11 |
| | | 43 | 18 | 8 |
| | | 23 | 1 | 1 |

The mentioned L*a*b* values are batch measured. Values of the individual chart can deviate.