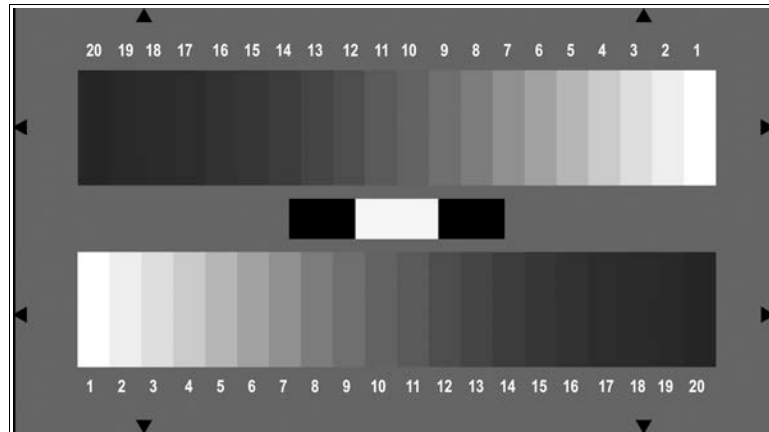




# OECF/NOISE CHART WITH 20 GRAY PATCHES

## CONTRAST 10,000:1

### TRANSPARENT



The TE259 is designed to check the dynamic range of broadcasting cameras on a waveform monitor. Two 20-step graduated counter current gray scale are arranged on a gray background, the gray scale is NOT graduated logarithmically nor linear! Densities are measured relative to the brightest patch.

Serial number:

Field	Reference density	Measured density
1	0.03	
2	0.10	
3	0.17	
4	0.24	
5	0.32	
6	0.41	
7	0.50	
8	0.59	
9	0.70	
10	0.81	
11	0.94	
12	1.08	
13	1.23	
14	1.41	
15	1.61	
16	1.85	
17	2.15	
18	2.53	
19	3.08	
20	4.03	
Background	1.38	

Date :

Signature :