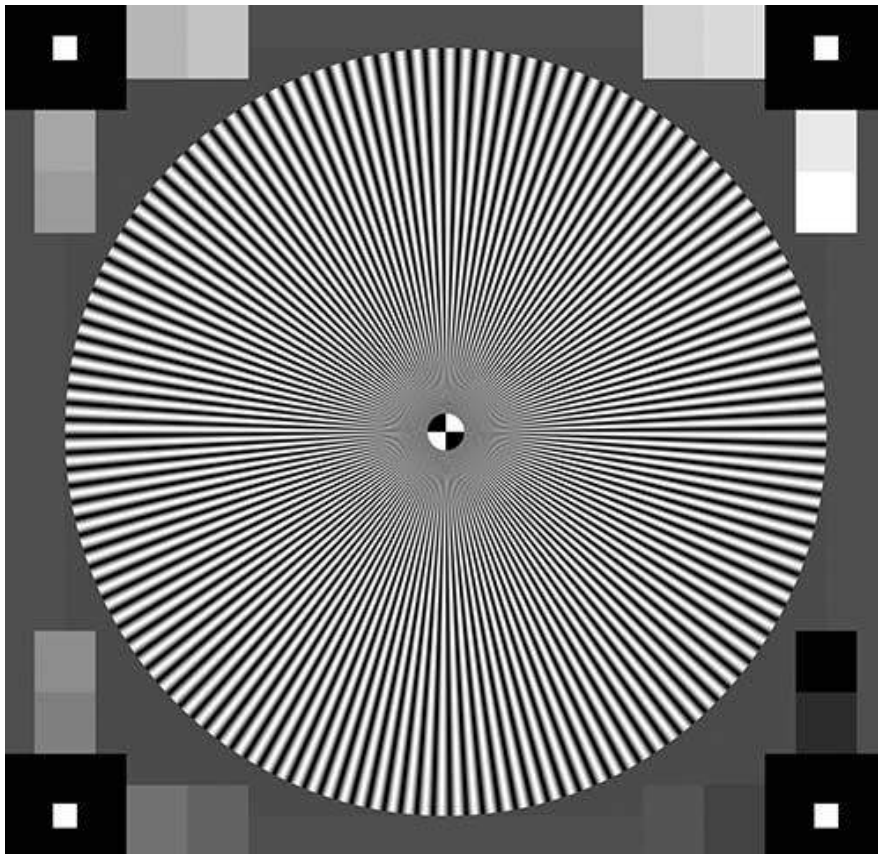


Quick Start Guide

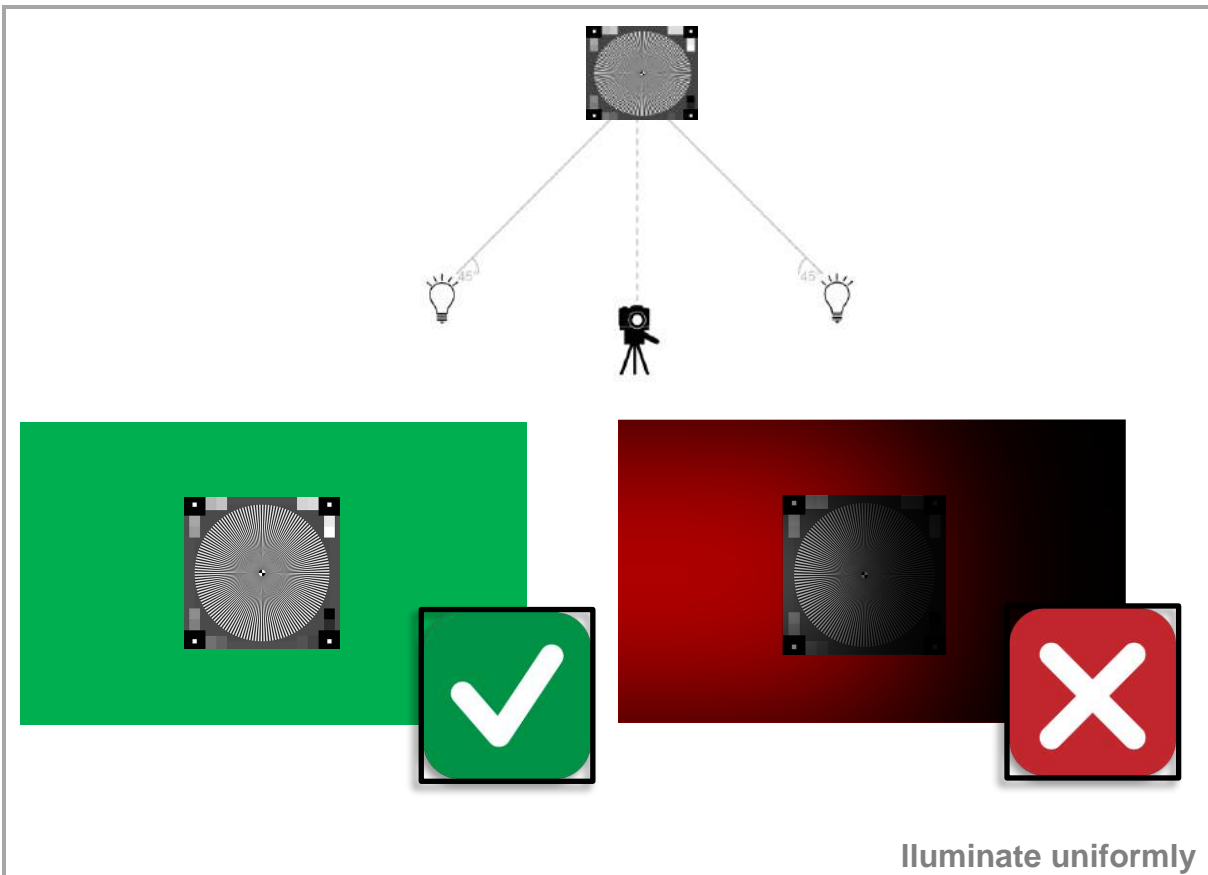
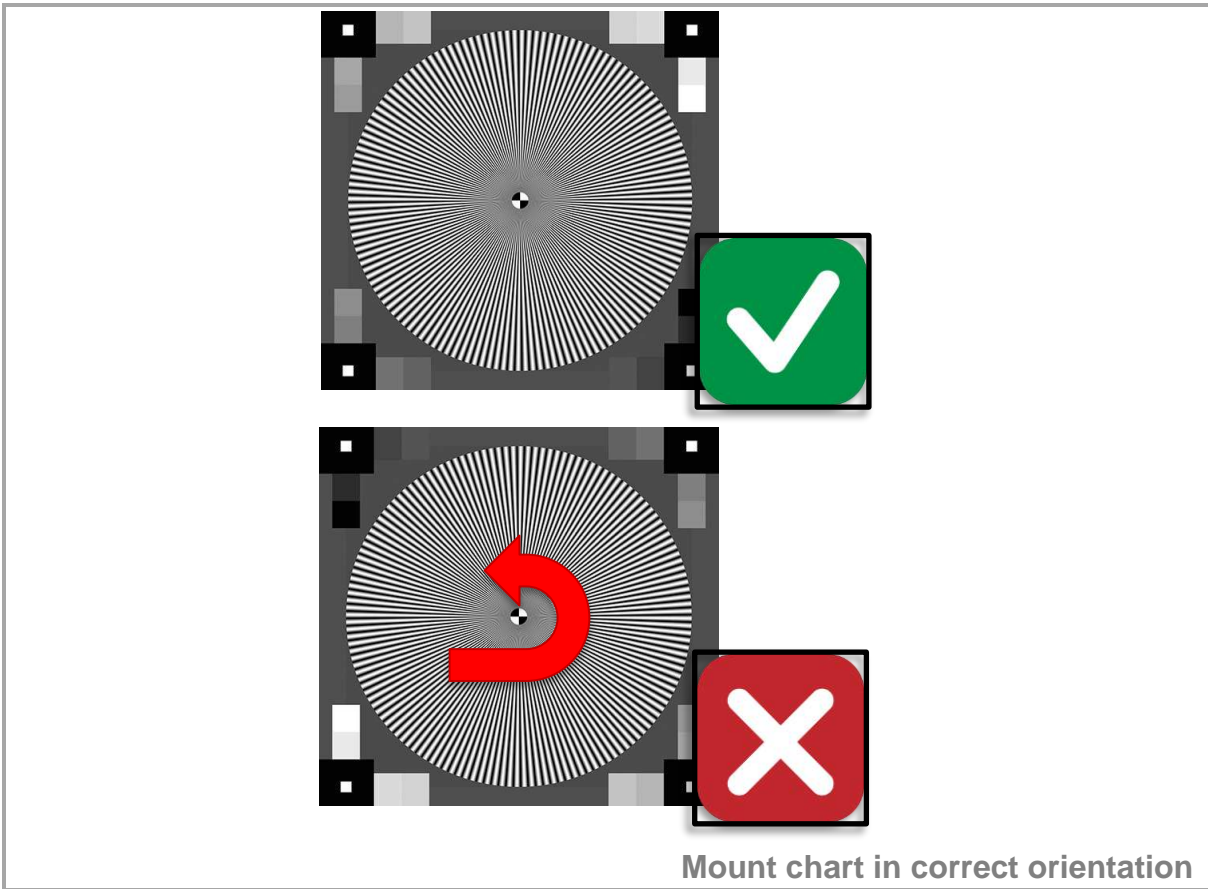
TE253 single

December 18, 2018





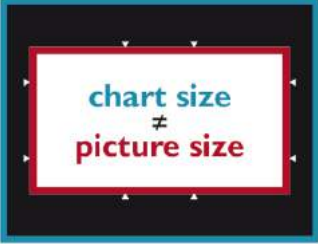
1 PREPARE CHART

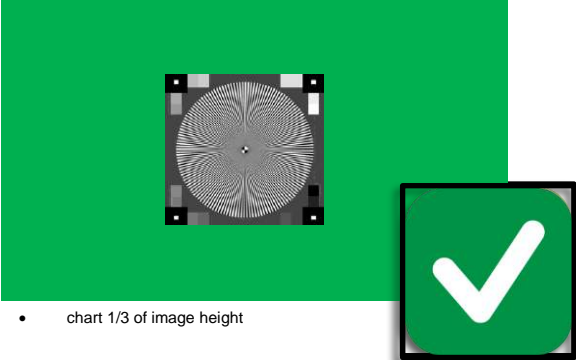




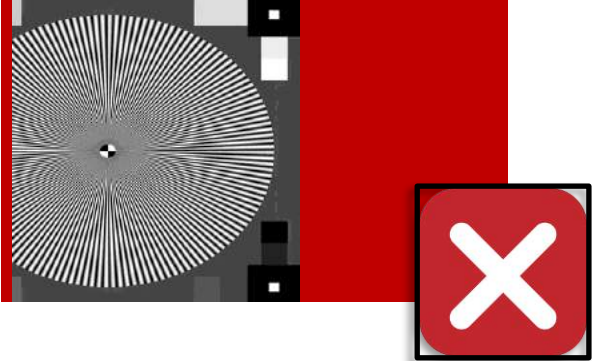
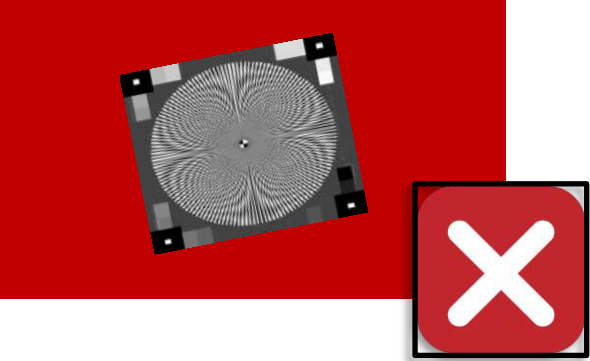
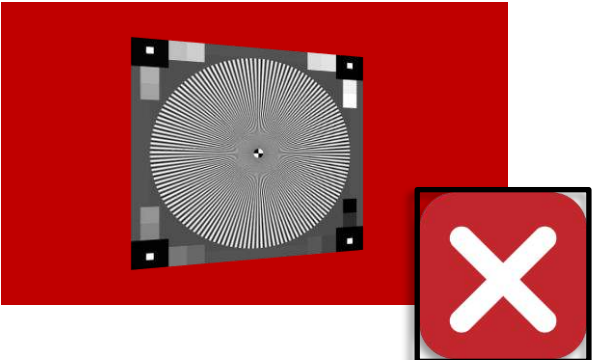
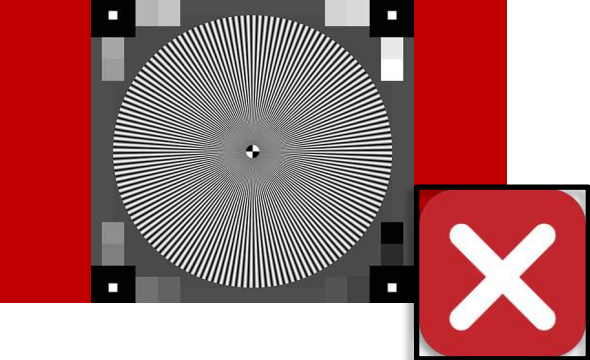
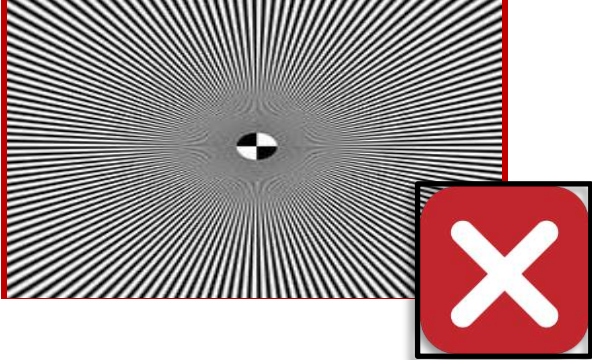
2 PREPARE CAMERA

chart size \neq picture size

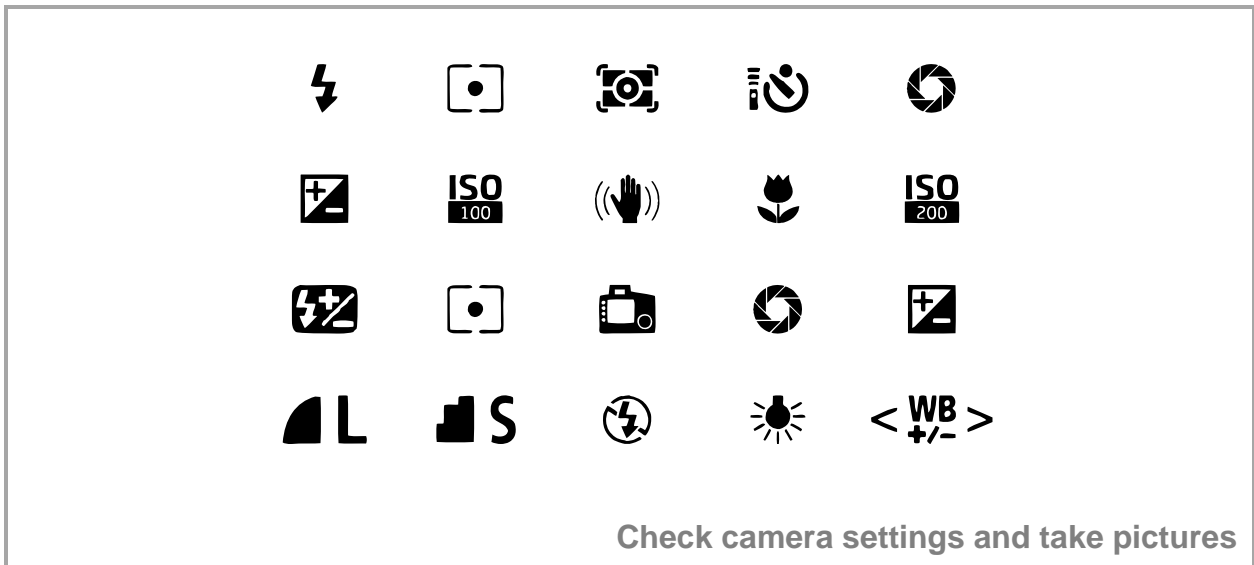




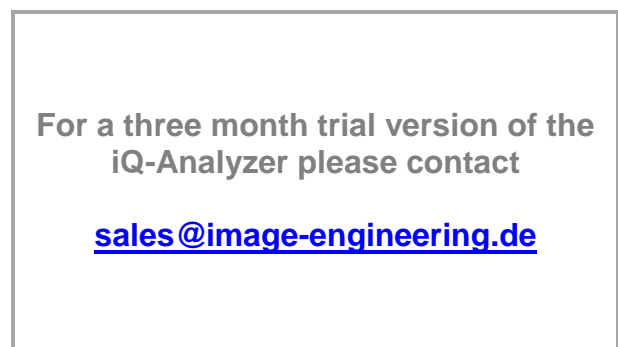
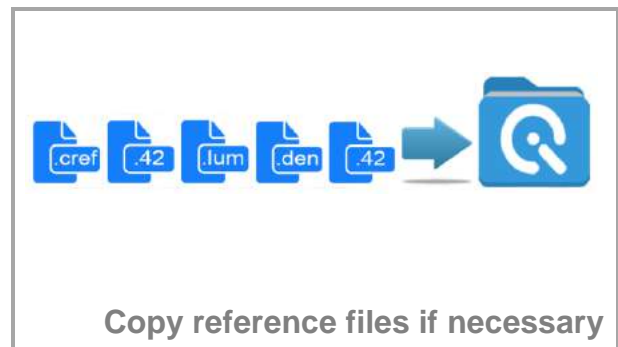
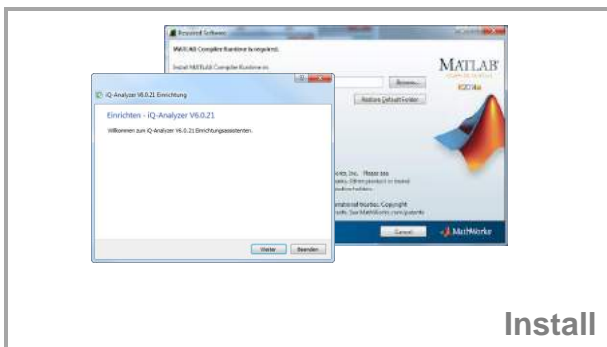
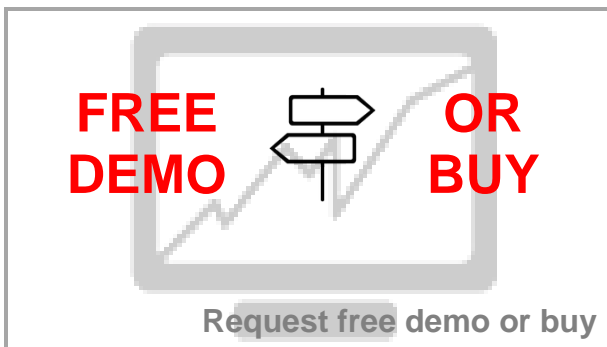
- chart 1/3 of image height



Align camera and chart



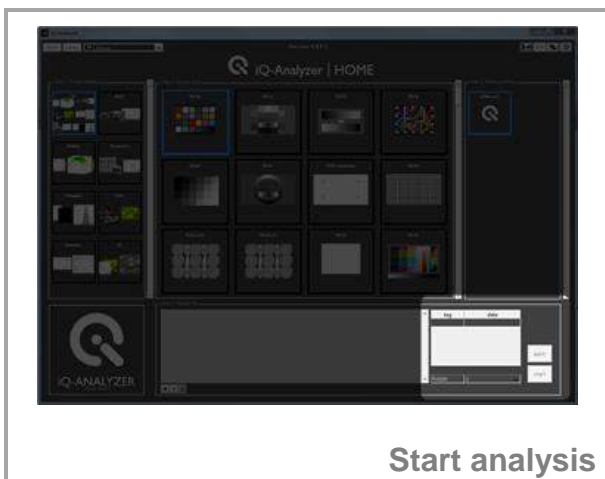
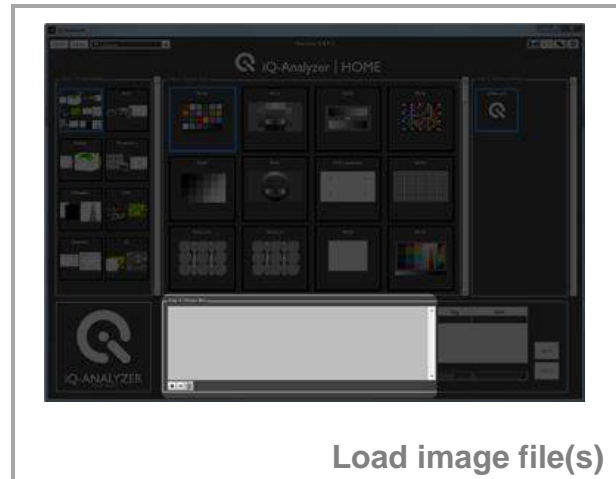
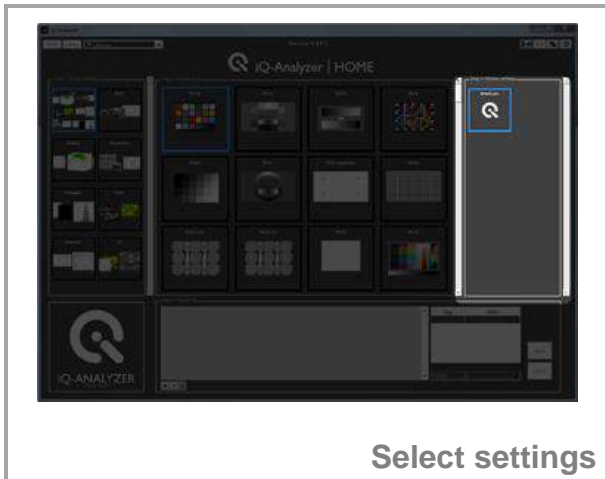
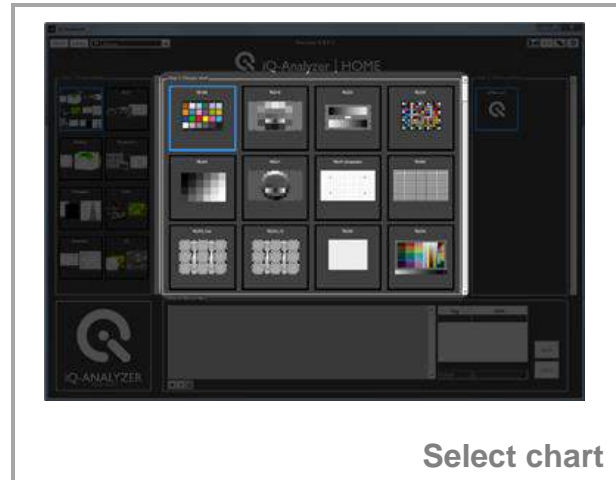
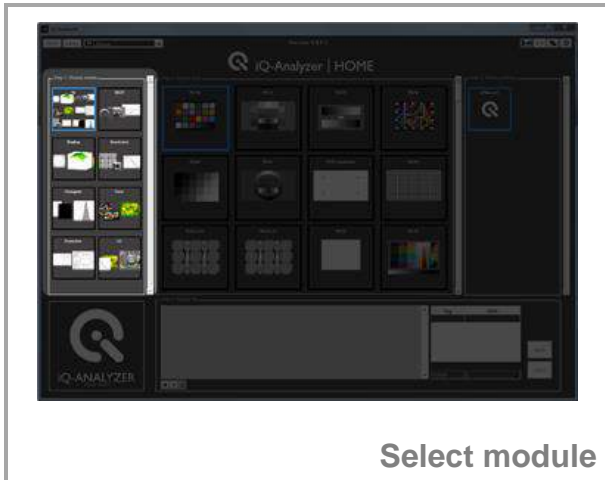
3 START SOFTWARE



* <https://www.image-engineering.de/products/software/376-iq-analyzer#downloads>



4 USE HOME SCREEN



For customizing the HOME SCREEN to your specific needs, please read the

iQ-Analyzer user manual *

Please note: Default Home Screen just contains default settings.

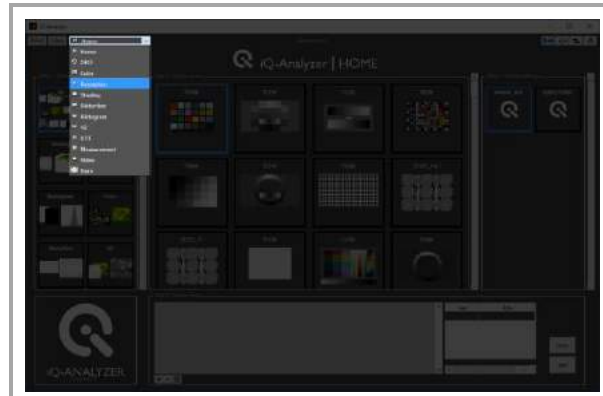
* https://www.image-engineering.de/content/products/software/analyzer/downloads/iQ-Analyzer_manual.pdf



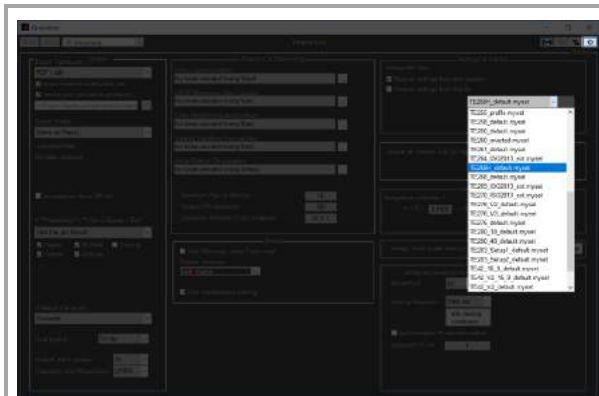
5 USE OF ADMINISTRATOR MODE



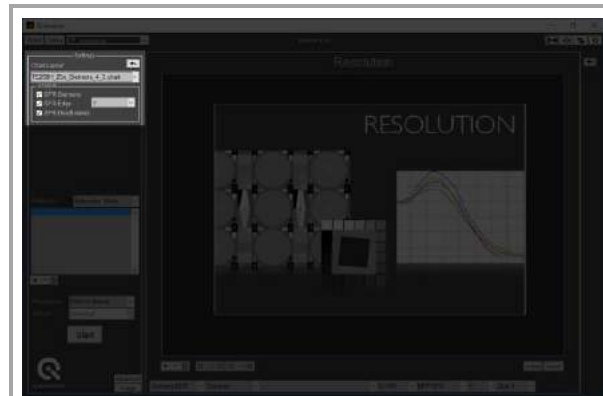
Enable Administrator Mode



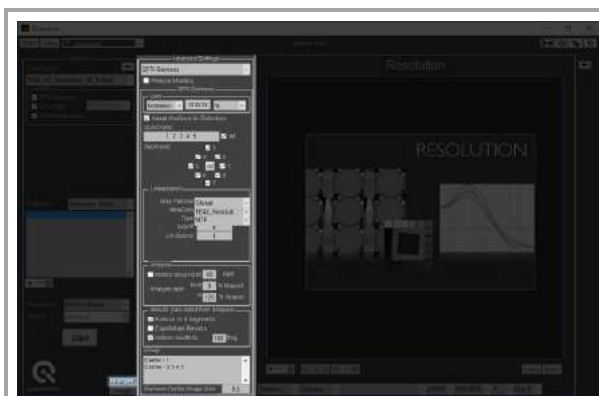
Choose module



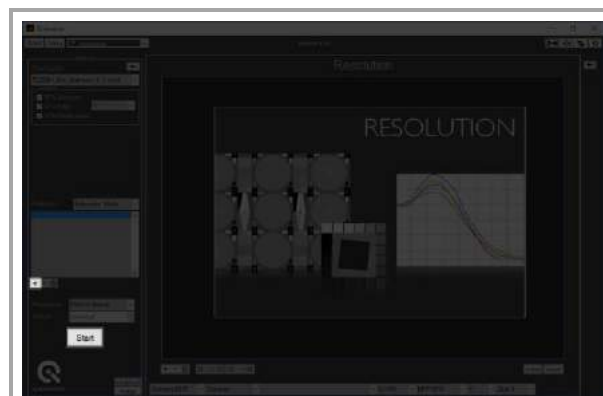
Go to Advanced Settings and choose .myset file for chart depending Settings



Check chart dependend Settings



Check Advanced Settings



Load image file(s) and start analysis

For all chart specific information about Settings and Advanced Settings please read the **iQ-Analyzer user manual ***

* https://www.image-engineering.de/content/products/software/analyzer/downloads/iQ-Analyzer_manual.pdf



6 WATCH THE RESULTS

Image **Result**

Toggle between image and results

Toggle between different result views



Hide and show side panels

View auto-generated result files

Congratulation!
You ran your first analysis!



7 WHAT'S NEXT?

Siemens - Overview

Star0
74 %

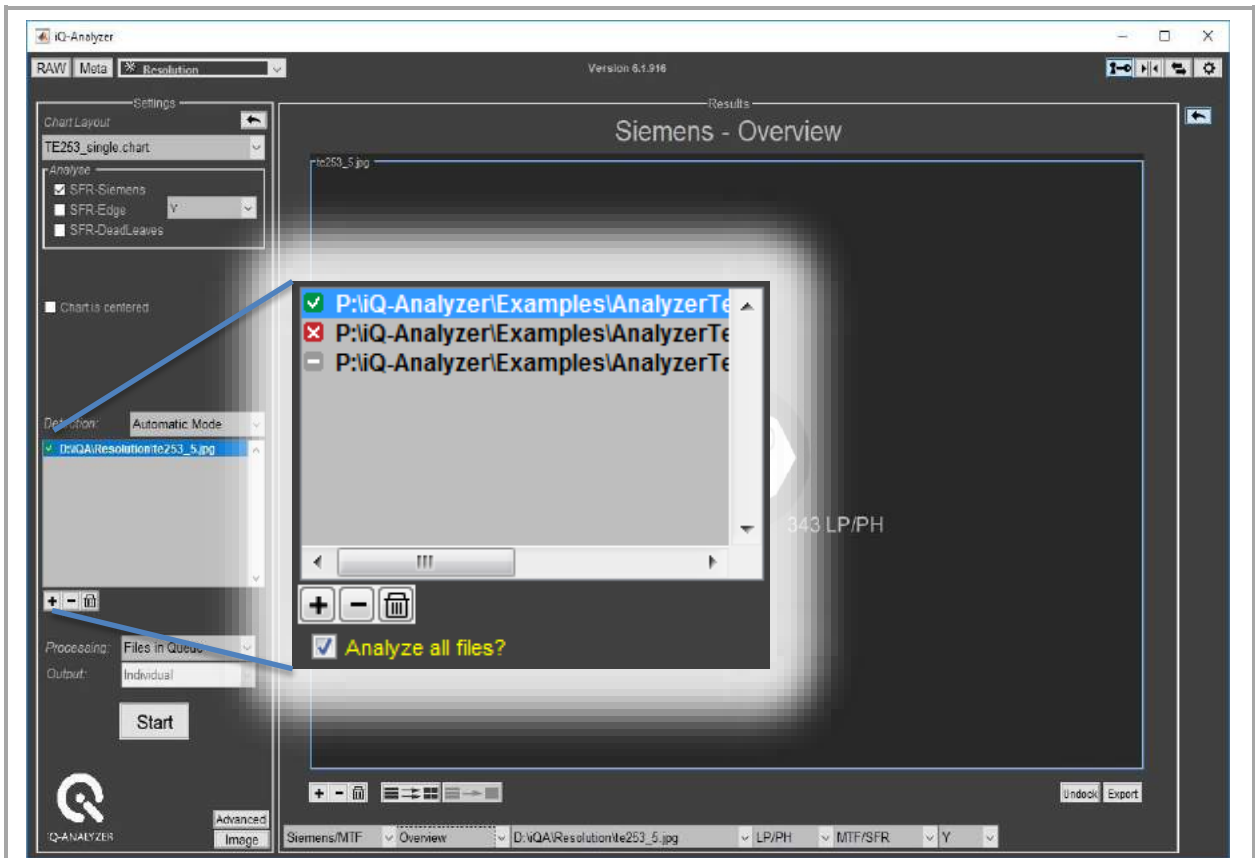
342 LPI/PH

te253_5.jpg

Name	-
Model	-
Width	1000
Height	904
Time	111
F-Stop	0.0
ISO	0
f(mm)	0.0
EV	-
Serial	-
Serial	-
Format	nefit
Resolution (x)	-
Object Distance (m)	-
Laboratory	-
Operator	-

Star0	
MTF 10 [LPI/PH]	342
MTF 25 [LPI/PH]	223
MTF 50 [LPI/PH]	94
MTF [%]	24.3
vMTF Set 1 [%]	30.3
vMTF Set 2 [%]	32.8
vMTF Set 3 [%]	27.0

Export results



Analysis successful



Analysis failed



Not analyzed yet



Analyze successfully analyzed images again?

Change settings and re-start analysis



8 NEED HELP?



Read the iQ-Analyzer user manual*



Attend our Webinars**



Ask our Support Team

9 CONTACT US

**Image Engineering GmbH & Co. KG
Support**

T +49 2273 99 991 0
F +49 2273 99 991 10

support@image-engineering.de

Germany

**Image Engineering GmbH & Co. KG
Sales**

T +49 2273 99 991 0
F +49 2273 99 991 10

sales@image-engineering.de

Germany

**Image Engineering GmbH & Co. KG
Direct Marketing Sales and Applications**

T +1 669 200 8921

sales@image-engineering.us

USA

* https://www.image-engineering.de/content/products/software/analyzer/downloads/iQ-Analyzer_manual.pdf

** <https://www.image-engineering.de/products/software/376-iq-analyzer#webinars>