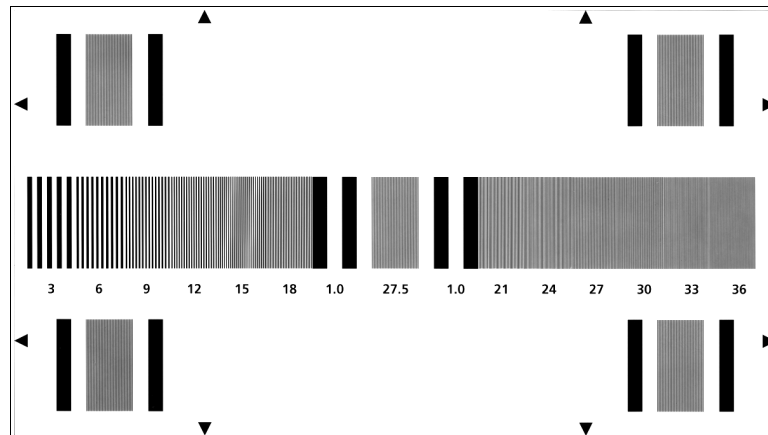




HDTV IN MEGA CYCLE TEST CHART 16:9

TRANSPARENCY



The TE239 is designed for checking the frequency response of modulation depth and the uniformity of modulation depth of HDTV cameras.

The test chart consists of 19 multi burst fields, which are distributed over 16:9 picture area.

The fields are arranged in horizontal and vertical direction to measure resolution in both directions. All fields are designated with figures, which give the corresponding frequency in MHz. The frequency is calculated in accordance to the 1080/50i system.

The row consists of frequencies from 3 to 36MHz with the 27.5MHz field in the middle of the row. To the left and right of the 27.5MHz burst one 1MHz field is positioned. The frequencies increase with steps of 3MHz. In the four corners of the chart are 27.5MHz fields surrounded by bursts with 1MHz. These burst serve as reference frequency.