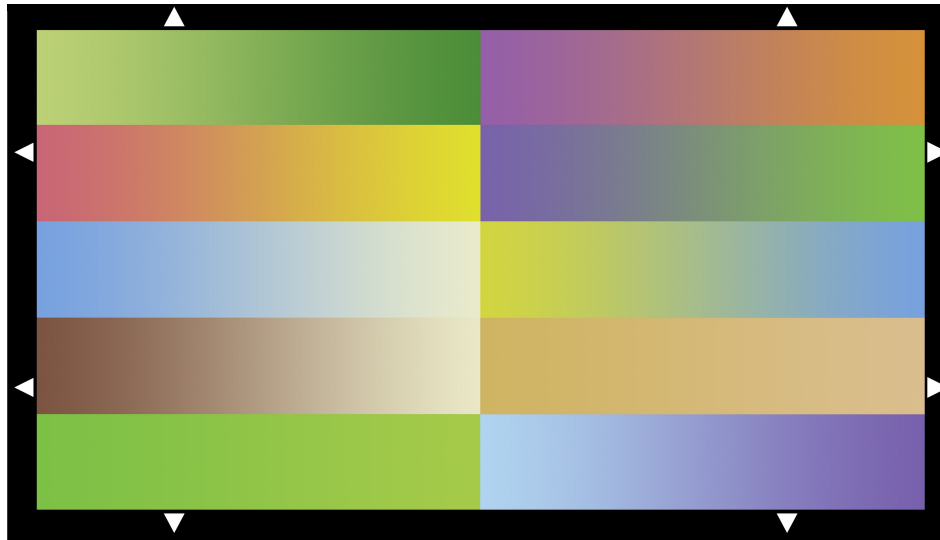




# CERTIFICATE

## COLOR GRADATION TEST CHART

### REFLECTIVE



The TE234 consists of different color grades. It is used to check quantization errors which results in visible steps in the grades.

The approximate color values in CIE XYZ and L\*a\*b\* (D50) can be taken from this table (starting and end point of each of the ten flows):

	CIE_X	CIE_Y	CIE_Z	CIE L*	CIE a*	CIE b*
1a	44,73	51,15	18,74	76,77	-12,82	37,92
1b	10,43	15,71	6,09	46,59	-31,51	24,03
2a	20,69	16,14	23,39	47,16	27,09	-22,47
2b	40,57	35,38	5,82	66,04	21,04	58,8
3a	30,43	21,86	13,57	53,87	39,24	10,91
3b	60,27	62,42	7,1	83,14	0,19	82,65
4a	16,05	14,19	24,52	44,51	14,19	-29,13
4b	20,78	28,98	7,11	60,76	-31,09	44,02
5a	23,74	26,3	44,41	58,32	-6,99	-34,54
5b	65,15	68,27	48,11	86,14	-1,51	9,03
6a	50,42	54,01	7,18	78,47	-4,38	74,24
6b	23,32	26,07	42,99	58,1	-7,87	-33,17
7a	13,22	11,26	5,32	40,01	16,39	16,38
7b	64,58	67,91	45,84	85,96	-2,03	11,39
8a	48,38	48,36	14,27	75,05	4,86	45,57
8b	53,89	53,66	24,94	78,26	5,57	28,31
9a	20,19	28,81	6,87	60,61	-33,3	44,78
9b	35,26	42,97	8,21	71,54	-19,76	58,24
10a	43,83	49,61	54,71	75,83	-11,38	-16,07

