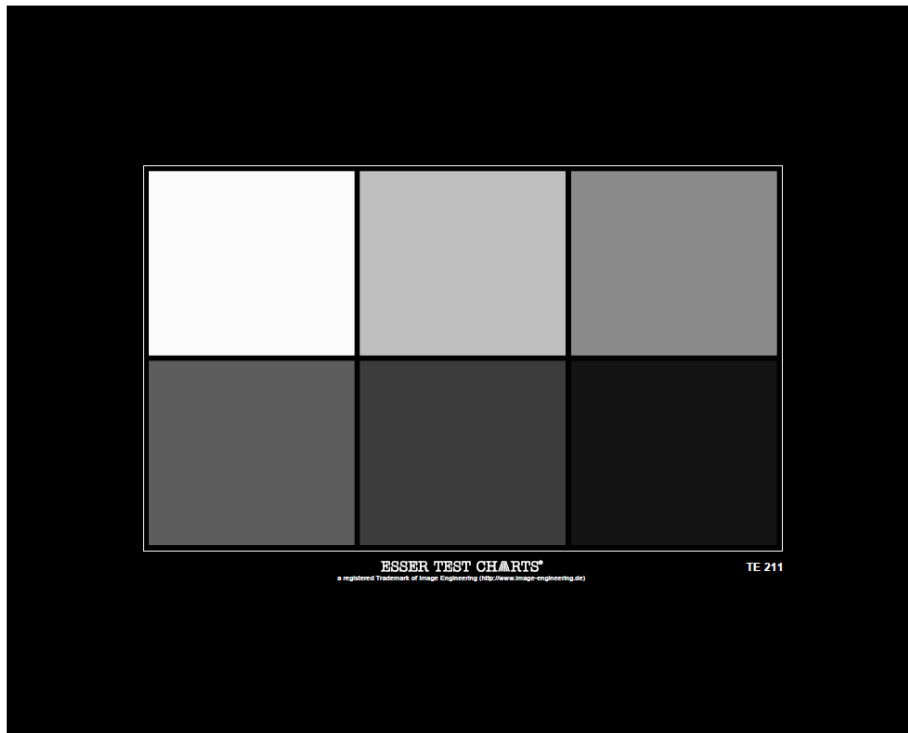




# CINE GRAY SCALE CHART (6 STEPS)

## REFLECTANCE



The test chart is designed for evaluating the brightness rendition and the neutrality of color rendition of cine cameras.

Inside a white frame corresponding to the S16 aspect ratio 6 neutral gray fields are arranged. Their brightness is graded in a way to correspond to one lens stop each.

The reflection and density values are:

| step | reflection | density |
|------|------------|---------|
| 1    | 90         | 0.05    |
| 2    | 45         | 0.35    |
| 3    | 22.5       | 0.65    |
| 4    | 11.25      | 0.95    |
| 5    | 5.6        | 1.25    |
| 6    | 2.8        | 1.55    |