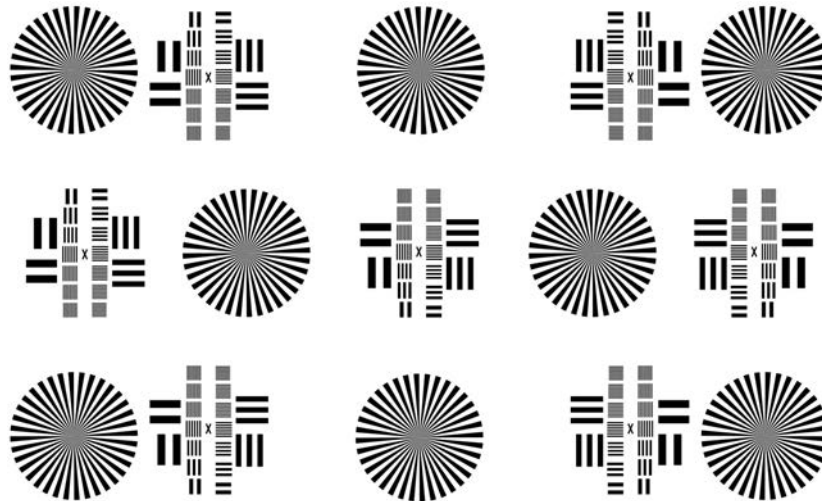




# CINE RESOLUTION TEST CHART

## REFLECTIVE



The test chart is used for evaluating the resolving power of a cine camera.

For this purpose the chart is set at a distance of the x-fold of the focal length to the centre of the lens. The x-fold of the focal length corresponds to the reduction scale. The following diagram shows the reduction scale 25, 50, 100, 200, 400 and 800. The resolution is indicated in line pairs/mm, actually for each of the fields marked C to K.

field	line pairs / mm with reduction scale					
	25	50	100	200	400	800
C	59.1	118.2	236.4	472.8	945.6	1891.2
D	41.8	83.6	167.2	334.4	668.8	1337.6
E	29.6	59.1	118.2	236.4	472.8	945.6
F	20.9	41.8	83.6	167.2	334.4	668.8
G	14.8	29.6	59.1	118.2	236.4	472.8
H	10.5	20.9	41.8	83.6	167.2	334.4
I	7.4	14.8	29.6	59.1	118.2	236.4
J	5.2	10.5	20.9	41.8	83.6	167.2
K	3.7	7.4	14.8	29.6	59.1	118.2