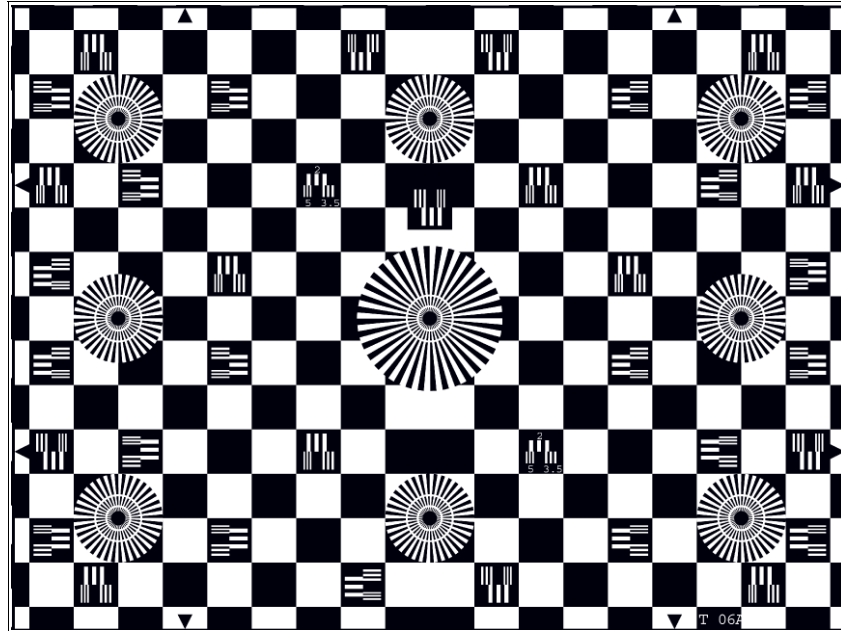




# CHESSBOARD TEST CHART

## TRANSPARENCY



The T06A test chart is designed for checking geometry and resolution.

### Data

Similar to a chessboard the test chart is composed of 13 x 18 black and white square fields which are surrounded by rectangular at the edges that correspond to the 14/19 grid raster lines of electronic test generators. (The division of the horizontal grid lines of these generators corresponds to 42 lines per complete picture.)

The inner circular lines of the nine sector stars mark a 625-line structure. The larger circular lines mark a structure of 312 lines. Horizontal resp. vertical line rasters are arranged in 33 white fields. They correspond to frequency raster of 2, 3.5 and 5 MHz.

### Utilization

- Checking geometry and the congruency of raster, by means of an electronically generated grid, if necessary
- Checking the uniformity of the signal generation.
- Checking resolution and its distribution over the picture area.
- Checking back focal distance.